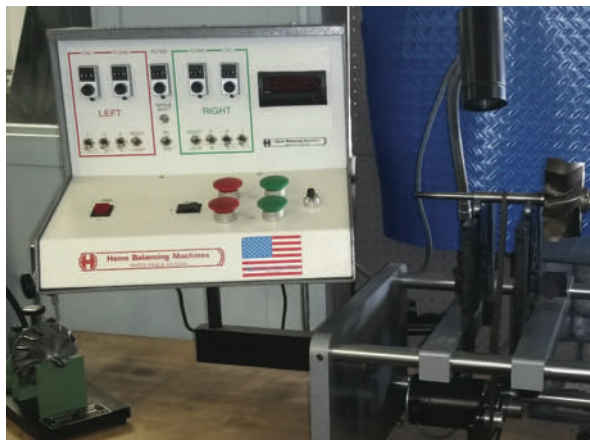


## TURBOCHARGER OVERHAUL

The turbocharger is critical to the power output and efficiency of your diesel engine. To keep your engine operating at its optimum performance, RPM performs turbocharger overhauls using only genuine replacement parts from the original manufacturer. Factory remans or new turbochargers are also available at competitive prices.



A digital balancing machine is used for precise balance of the individual components as well as the complete core assembly. Balancing, along with careful overhaul using quality components, helps ensure a high performing, smooth operating, reliable turbocharger that is comparable to a new unit.

## PARTS DEPARTMENT

A computerized database allows our service staff to quickly and efficiently search our in-store stock of over 68,000 diesel engine parts including new, hard-to-find, and even some that are obsolete. We will also source any part not in our inventory.



# WE ARE YOUR COMPLETE RESOURCE

### MARINE DIESEL

MTU  
DETROIT DIESEL

### GENERATORS

KOHLER  
NORTHERN LIGHTS  
WESTERBEKE  
MTU  
DETROIT DIESEL

### TRANSMISSIONS

ZF OF NORTH AMERICA  
ALLISON  
TWIN DISC  
BORG WARNER

### FUEL INJECTION SYSTEMS

BOSCH  
STANADYNE  
DELPHI  
DENSO  
ALLIANT POWER  
ZEXEL  
YANMAR  
CATERPILLAR  
CUMMINS  
MTU  
DETROIT DIESEL

### TURBOCHARGERS

GARRETT  
BORG WARNER  
HOLSET  
KKK  
SCHWITZER  
MITSUBISHI  
IHI  
MTU  
DETROIT DIESEL

### FILTERS & FILTRATION SYSTEMS

RACOR  
WALKER (AIRSEPS)  
SEAPRO

### LUBRICANTS & ADDITIVES

POWERGUARD  
NALCOOL  
BIOBOR  
STANADYNE  
CHEVRON OIL

# RPM

## DIESEL ENGINE CO., INC.



Authorized **DETROIT DIESEL**



**RPM DIESEL ENGINE CO., INC.**



Authorized **DETROIT DIESEL**



2555 W. State Road 84 (Marina Mile)  
Fort Lauderdale, Florida 33312  
954-587-1620 Phone - 954-583-7939 Fax  
rpmdiesel.com - sales@rpmdiesel.com

**MARINE DIESEL**

**GENERATOR**

**FUEL INJECTION**

**COMMON RAIL**

**TURBOCHARGER**

# RPM DIESEL ENGINE CO., INC.



Authorized **DETROIT DIESEL**



**RPM Diesel Engine Company provides the most knowledgeable sales staff, the highest caliber service technicians and the most extensive parts inventory to clientele in South Florida, the Caribbean and locales world-wide.**

## MOBILE FLEET

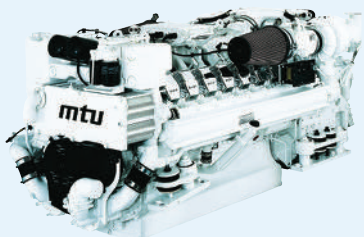
Daily we dispatch a dependable, fully equipped fleet of service trucks for on-site and dockside maintenance or repairs. Each vehicle is operated by a certified marine technician and includes a partial shop and parts department on wheels.



*Whether we perform your work at our shop or your site, you will receive the very best service at an unparalleled value.*

## DIESEL ENGINE OVERHAUL

Our master, senior and elite craftsmen are MTU-Detroit Diesel factory certified and perform work strictly to manufacturer specifications using only genuine replacement parts. We also carefully plan a preventative maintenance program to ensure engine equipment continues operating at the highest level of dependability.



Proud members of:



**SALES | SERVICE | PARTS | SINCE 1956**



## GENERATOR SERVICE

We are a factory authorized dealer for Northern Lights, Westerbeke and Kohler generators. From complete overhauls to back-end repairs, our factory trained technicians will get you going again.



*In our state-of-the-art overhaul and repair facility tolerance and cleanliness are of the utmost importance.*

## FUEL INJECTION SERVICE

At RPM's complete, dedicated, fuel injection and turbocharger service shop our goal is longer injector life, greater engine performance, and higher satisfaction for our customers.

**Specialized equipment removes the guesswork and assures each customer receives the ultimate quality for their money.**

### Injection Pump:

Our computer assisted injection pump test bench ensures all measurements meet explicit factory



disassembly and rebuilding of failed units.

specifications so your fuel settings are accurate and precise. We handle everything from testing and evaluation of out-of-engine fuel injection pumps to complete

### Electronic Unit Injectors:

Cambox test equipment eliminates any uncertainty when servicing EUI equipped engines. This advanced analysis equipment allows us to flow check those individual injectors deemed bad and verify your troubleshooting needs.

### Common Rail Fuel Injection:

The complex common rail fuel systems used by engine manufacturers today enable control of both



the injection timing and injection rate. At RPM we have invested in specialized equipment designed to service these sophisticated systems.