



**Yacht-Mate™**  
Products



## **We are committed to quality.**

Yacht-Mate Products is dedicated to the development and provision of the finest quality environmental systems and equipment available.

Yacht-Mate Products offers over 25 years of experience in the Environmental Field of Water and Air purification systems for land and sea-based applications. Today, we bring the benefits of this expertise and knowledge to everyone who enjoys boating. We also understand that along with the passion for being on the water there are also several areas of serious concern aboard your vessel. Your health, comfort and the environment are our primary focus.

Is the quality and microbiological integrity of your drinking and fresh water a priority for you? Do the odors stemming from mold, mildew, moisture, or both your bilge and waste tank make you feel like staying on shore? Yacht-Mate Products specifically address all these issues and more!

Our systems offer the most advanced technologies. We offer state-of-the-art products that help to ensure your boating experience is more leisurely and enjoyable than ever before, the way you expect and deserve it to be.

Yacht-Mate provides a variety of products to put your mind and senses at ease. We invite you to browse through our Yacht-Mate Products systems descriptions. As boating enthusiasts ourselves, we know you'll be glad you did!



**Yacht-Mate**  
Products

# Product Catalog

## Water Softeners Portable and Installed

- Manual & Semi Automatic
- Automatic Valves
- Dockbox Softener
- Twin Tank Systems
- Custom Sizes Available

## Drinking Water Systems

- Reverse Osmosis 50-100gpd POU
- 3M POU filters
- Whole Boat Systems up to 20 gpm
- POU - UV Drinking systems

## Viqua Ultra-Violet Sterilizers

- Sterilight®
- Trojan
- Integrated UV & Filtration

## Odor Control / Sanitizers Hydroxyl Generators -

- Better Air Probiotics
- Gelair
- Puroshphere
- Bilge & holding tanks
- Living Areas & AC systems

## Difussion Machines

- Aura Aromatherapy

## WaterMakers

- Tecnicomar Watermakers
- SK Watermakers

## Sewage Plants

- Ecomar systems (black & grey water)

## IceSea Crushed Ice

- Fresh water
- Optional saltwater 2 piece or new Compact size

## Additional Products

- JG Marine Fittings Inch & MM
- Test Kits

## Filter Cartridges & Housings

- Standard & Full Flow (BB) Sediment, Carbon & Specialty
- Sea Recovery Filters

## Accessories

- Water Meters Digital & Manual
- Brackets

## Spot Zero Fresh Water RO

- Dockside System

# Water Softeners Portable and Installed

## Dock-Mate™



### Installable Unit

#### DM-1000

Vessels 50 ft. to 150 ft.  
Softens 6400 gal. at 5 grains  
Dimensions: 10"D X 40"H  
20 micron pre-filter included!

CUSTOM SYSTEMS  
ARE AVAILABLE FOR  
YACHTS OVER 150 FT.

### Portable Units

#### DM-1001

9"D X 23"H  
3200 gal. at 5 grains



### Mid-Size Unit

#### DM1004

Portable or Installed  
Dimensions: 10" D x 28" H  
Softens 4800 Gal. at 5 Grains



## Benefits

- Eliminates hard water spotting and stains on finishes and fixtures
- Protects and extends the life of wax and bright work
- Saves time and money cleaning
- No messy recharge
- Eliminates calcium build up in water lines, heaters, tanks, and pumps
- Softens skin, hair and laundry
- Eliminates etching on fine China and glassware
- Easy operation

# soft water

## Dock-Box

### DM-1002 Dock-Box Softener

Softens 3200 gal. at 5 grains

Dimensions: 23"W X 21"D X 25"H

Non-skid top can be used as a secondary step down to cockpit or as a seat when underway, can be personalized

Storage space for soaps and bright work supplies!



**ALL SOFTENERS INCLUDE HARDNESS TEST KIT, BRINE TANK AND CAPACITY CHART. PORTABLE UNIT INCLUDES INLET HOSE (JUST ADD SALT WHEN NEEDED)**

## Dock-Mate™

### Portable Unit With In And Out Head



### DM-1003

Dimensions: 9" D x 21"H

2 ft. recharge hose

4 ft. inlet hose

Manual Water meter

Test kit

Recharge kit

## Features

- High capacity fine mesh resin for higher flow rates
- Digital or manual metering for accuracy
- Non-electric control valve for proper recharging and continuous softening. Controls the flow rate for brine, slow rinse and service
- Self-cleaning polypropylene upper and lower distribution systems
- Limited life time warranty

# Automatic Softeners

## Cabinet Unit

### Features

- Solid state microprocessor with easy access front panel settings
- Three modes of operation meter immediate, meter delayed, or time clock delayed
- Double backwash feature, offers optimum regeneration, cleaning ability, and efficiency
- 36 selectable pre-programmed regeneration cycles
- Days override feature 1 – 28 day's available
- Backwash and brining ability to 22" diameter tanks
- Stores system configuration and operation data in non volatile memory
- Capacitor back-up with up to two hour power carry over
- 12-volt output AC Adapter provides safe and easy installation



### **TW-CABINET**

Dimensions:

12"W X 22"D X 44"H

ALL-N-ONE

## Twin Alternating Control Valve

with meter and bypass

### Features

- Solid state microprocessor
- Front panel display for time of day, days until next regeneration, volume remaining, current flow rate and total volume used (Totalizer), and Tank in Service Indication
- Four methods to initiate regeneration
- Optional double backwash feature offers optimum regeneration, cleaning ability and efficiency
- Adjustable cycle times with 6-cycle control delivers controlled backwash, downflow brining/slow rinse, second backwash, fast rinse, refill and downflow service
- Coin Cell Lithium battery back-up with a 8 hour carry over
- 12-volt output AC Adapter provides safe and easy installation
- Treated/Soft water post fill and regeneration cycles



# Water Softener Accessories

## Softener Mate®

### All Purpose Water Softener Cleaner

Maintains performance of all softeners.

Pro Softener Mate softener cleaner is a unique blend of chemicals formulated to remove limited iron, manganese, silt, metal particles and organic compounds that cause softener inefficiencies. Regular use of Softener Mate softener cleaner as a maintenance program will restore the softener back to peak efficiency and maintain the life of the unit.



## Rust Out®

### Water Softener Rust Remover

Maintains performance of softeners on iron bearing water.

Rust Out softener rust remover chemically removes iron and rust build-up that coats the resin beds and fouls the softener. This iron build-up is not totally removed during normal regeneration of a water softener. Using Rust Out softener rust remover in a water softener will eliminate rust and foreign matter from the resin bed. This increases the life of the softener and reduces rust staining on household fixtures and other surfaces. Use the softener rust remover regularly as preventative maintenance to ensure the softening and recharging efficiency of the softener's resin bed.



#### FM-WPF Single White Pre-filter

with Garden Hose Connections, 5 micron sediment filter & 2 Ft. Hose (no stand)



#### Dockside Dual Big Blue Pre Filters

4.5"D X 10", 1- 5 mic, 1- 20 mic includes garden hose Fittings and a 2 ft. Inlet Hose



#### Dockside Dual Standard Pre Filters

1- 5 mic, 1- 20 mic Filters includes garden hose Fittings and a 2 ft. Inlet Hose



fresh

# Drinking Water Systems

## POLISH & PURIFY YOUR DRINKING WATER

### R/O-Reverse Osmosis

REDUCES BOTTLED WATER  
STORAGE AND COST BY 50% OR MORE

#### Features and Benefits:

Kwik-Change RO System  
No Sumps! No Mess! No Fuss!

- 50 OR 100 GPD
- Hinge bracket for easy handling.
- Automatic shut off when cartridges are removed with a simple, 1/4 turn.
- No need to disconnect tubing when replacing membranes.
- Integrated check valves between cartridges and membrane prevent back-flow.
- Cartridges have double o-rings so they will not leak.
- Quick connect fittings for easy installation.
- 98%+ Reduction of total dissolved solids (TDS) Eliminates chemicals, organic matter, salts, taste and odor
- Prevents passage of 99.9% of bacteria and virus\*
- Multiple points of use (additional tank(s) required)



TAKES YOUR STORED WATER PRODUCED BY YOUR  
WATERMAKER AT 150 PPM TO LESS THAN 10 PPM FOR  
PURE SAFER WATER CONSUMPTION

#### GM-50

Dimensions:  
12"L X 4.5"D X 14"H

#### GM-100

Dimensions:  
12"L X 4.5"D X 16"H  
Tank: 9"D X 20"H White Plastic  
4gal. or 12" d x 14"h  
Tank: 12"D x 16"H White Metal  
LARGER SIZES AVAILABLE



\*For use on microbiologically safe water



# pure

## Water Filtration

### The low cost alternative to RO!

#### Kwik-Change Drinking Water Systems

- Low cost alternative to RO.
- No reject water (100% of the water is used).
- No pressure problems! Units work as low as 15 psi / 1 bar pressure.
- Installation is quick and easy.
- Leaves essential nutrients in water.
- No storage tank needed.



**GM-UF 5000**  
Ultra Filtration

BOTTLED WATER IS COSTLY AND BAD FOR OUR ENVIRONMENT. TAKE CONTROL OF YOUR WATER QUALITY WITH YOUR OWN KWIK-CHANGE DRINKING WATER SYSTEM YOU ARE IN CONTROL OF YOUR WATER QUALITY!

## 3M

Authorized Water Dealer

### 3M Full Flow Undersink Water Filtration

For drinking, ice, and cooking water. Offers easy under sink installation. Uses your existing galley sink faucet

### Whole Boat Water Filtration

3M™ Water Filtration Products single cartridge water filtration systems reduces sediment and chlorine taste and odor for up to 100,000 gallons, flow rates up to 20 gpm with 1" NPT connections.



### Designer faucets are available in:

White • Almond • Black • Brass  
Satin • Chrome • Chrome With Brass

ADDITIONAL SYSTEMS AND SPECS ON OUR WEBSITE

[WWW.YACHTMATE.COM](http://WWW.YACHTMATE.COM)

# Viqua Line Of UV Sterilizers



## Features and Benefits:

### Sterilume™-HO UV lamps

- "BASIC" controller- lamp life remaining, total operating time, and universal power input
- New Sterilume™- HO high-output coated UV lamps
- Compact design requiring small installation footprint
- 304 axial flow stainless steel reactors
- 10-42 gpm

### UV INTENSITY MONITOR AVAILABLE ON PLUS SYSTEMS

IN ADDITION TO BACTERIA (E. COLI), VIRUS, ALGAE, MOULD AND OTHERS, STERILIGHT UV SYSTEMS ARE EFFECTIVE AGAINST PROTOZOA SUCH AS CRYPTOSPORIDIUM AND GIARDIA LAMBLIA. UV EFFECTIVELY DESTROYS THESE PROTOZOAN CYSTS AT DOSAGE LEVELS WELL WITHIN THE LEVELS DELIVERED BY ALL STERILIGHT ULTRAVIOLET DISINFECTION SYSTEMS.



### ICE BALLAST-CONTROLLER

sterilize

# safe water



## Trojan UVMAX™

### Features and Benefits:

UVMAX™ systems undergo exhaustive testing and evaluations to ensure they inactivate harmful pathogens, including *E. coli*, *Cryptosporidium*, and *Giardia*.

- Safety Cap and Special Lamp Plug
- UV Sensor (Plus series)
- Unique Lamp/Sleeve Assembly
- Handy Reference Card
- Confidence in Proper System Operation
- Helpful Lamp Replacement Reminder
- Lamp Timer Reset Button
- Mute Button
- High Performance UV Lamp

## Integrated UV Purification

### Features and Benefits:

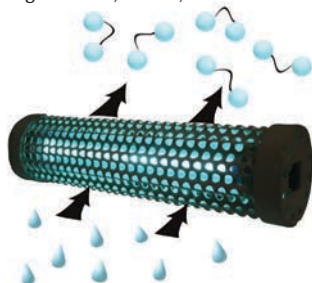
- Equipped to inactivate chlorine-resistant parasites, harmful bacteria and viruses not visible to the naked eye.
- The system is easy to maintain
- The ultraviolet lamp can be changed without interrupting the water flow
- Built with a durable stainless steel chamber to prolong life and eliminate ultraviolet light degradation.
- Comes equipped with a 5-micron sediment pre-filter to reduce particles in the water.
- Also comes equipped with a 5-micron carbon filter to reduce taste and odor of chlorine.
- High flow polypropylene filter housings with 1" full flow connections, available in either 10" or 20" versions.
- Solid steel mounting bracket, compact design and easy to install.



# Hydroxyl Generators/Odor Control

## IOXmar Air Sanitizers

Marine applications: To eliminate and prevent from mold, and provide odor control from bilge, engine room, cabins, staterooms & social areas.



### TECHNOLOGY:

The IOXmar technology takes moisture from the air and creates a plasma of hydroxyls & hydroperoxides. Just like hydrogen-peroxide eliminates viruses & bacteria on a wound, the hydroxyls & hydroperoxides will search and destroy odors & other pollutants in the air and on surfaces.



### IOX -50 AC

Blower size 500-750CFM

Weight 1lb

Dimensions: 2.25"W x 10.5"L x 1.25"H

Voltage 12VDC input 110/220V 50/60hz

Total electrical 10W

Material/finish Aluminum Housing

Capability up to 500 sq/ft

### IOX - 150R

Capability 1 Room Less than 750 sq ft

Weight 2 lbs.

Dimensions: 4"H x 4"W x 14"L

Material/Finish Aluminum/Polymers

Voltage Total Electrical Usage

110V/220V/12V Less than 1 amp

Fan Volume at Discharge Minimal

Controls On/Off & Low/High

## Benefits

- Clean Air, free of pollutants and particles
- Elimination of BAD ODORS from a Room to an enclosed Stadium.
- Safe for people, pets, and plants; as well as for synthetic materials, natural rubber, etc.
- Chemical Free, No cleaning after, or storage prevention, nor recurring purchasing.
- Eco-Friendly
- Very Low Maintenance
- Priced very competitively compared to less effective UV technologies.
- Excellent Cost/Benefit return

# odorless

## IOXmar

### 200/250

Capability 10,000 cubic feet

Weight 4 lbs.

Dimensions: 4"L x 4"W x 18"H

Material/Finish Stainless Steel

Voltage 110V or 220V

Total Electrical Usage 1 amp

Fan Volume at Discharge 45 CFM

Controls Indicator Light / On/Off

**MODEL IOXMAR 200 HAS ONE 9" IOX CELL.  
THE IOXMAR 250 HAS ONE 9" HIGH OUTPUT  
IOX CELL WHICH PRODUCES >50% MORE  
HYDROXYLS THAN THE STANDARD 9"  
NORMAL CELL.**



## Gelair™

The broad spectrum anti-microbial and anti-fungal properties of *Gelair* products can be used extensively throughout the marine industry to improve air quality, clean and sanitise and provide long lasting protection against mold growth. In particular, *Gelair* Air-conditioning Blocks, *Gelair* Tub, *Gelair* All Purpose Sterilizer and Cleaner and *Gelair* Coil and Duct Cleaner can be used in a marine environment on:

## Applications

- Oil & Gas Platforms
- Tugs & Work Vessels
- Ferries
- Super yachts
- Leisure Crafts
- Submarines



### Gelair Tub

Gelair™ gel matrix in an all-purpose Tub to suit low volume, low flow areas such as bathrooms, toilets and wardrobes. The controlled and sustained release of Australian Tea Tree Oil vapour provides long lasting, maintenance-free protection against mold, bacteria and viruses. Small (250mL) and large (500mL) Gelair™ Tubes available in two fragrances to ensure a product to suit your needs



# Ecological Balancing Systems

# BetterAir

the world's first *probiotic*  
air and surface purifier



## BA-008 Eco-Balancing Purifier

The BA-008 is an automated system designed to aerielly distribute a special probiotic compound engineered for long- lasting indoor air quality and surface protection. The cartridge lasts 70-100 days depending on use (low, medium, high, 10 hour sleep mode). Suitable for a variety of indoor spaces up to 800 sq. ft. including bedrooms, living areas, kitchens, closets and bathrooms.

## Benefits

- Increases the ratio of good bacteria to bad bacteria including dust mites, mold and allergens
- Repeatedly mists Environmental Probiotics into the air and coats, shields and penetrates surfaces such as upholstered seating, carpeting, kitchen countertops, bathroom sinks and much more!
- Purifies inside out of reach places such as mattresses, pillows, fabric sofas, carpets and toys
- Eliminates bad odors caused by microbial contamination such as mold and mildew
- Low maintenance- replace cartridge every 70-90 days (depending on use)

Approximately 100 trillion probiotics call our gut, home. They are essential to our survival and act as our natural defense system to help our bodies fight disease-causing bacteria, digest food, absorb nutrients and promote a health GI tract. They are commonly found in yogurts, fermented foods and digestive supplements.



## Environmental Probiotics Cold Fogger

The Environmental Probiotics solution can also be misted directly onto any enclosed space with the use of an Ultra Low Volume (ULV) fogger, as Thermal foggers would destroy probiotics. Ultra-low volume is very efficient as it uses less water and fills the room without the applicator needing to physically cover or clean all surfaces. The technique enables to proactively reduce foul odors caused by mold and mildew while also improving the indoor air quality in a 100% organic, chemical free and environmentally friendly fashion.



## Environmental Probiotics Spray

On-the-go, long lasting protection for you and your surroundings! Probiotic misting offers a safe and natural way to create a protective shield on surface and objects from organic irritants such as pollen, dust mite waste and pet dander. The ultimate accessory for the frequent traveler, busy parent, germaphobe and health conscious individual.

# Disinfect & Deodorize



## Ultra-Pure Chlorine Dioxide:

A chemical compound with the formula  $\text{ClO}_2$ . It is a potent and useful oxidizing agent used for deodorization, sanitization, disinfection as well as mold remediation.

- Kills viruses and bacteria leaving your space 99.9999% clean
- Cleans water lines
- Eliminates all odors by killing the compounds that cause them
- Increase the life of equipment

## Benefits

- Ultra-pure chlorine dioxide from Purosphere is easy to use –Just Add Water!
- Almost all uses for Purosphere distributed products involve spraying or washing the target product or surface.
- Gas phase also available to deodorize spaces, and get in the cracks and crevices.
- Very low toxicity profile
- Extremely effective against microbial threats
- Non-corrosive, compatibility with the widest range of materials
- Highly effective at very low concentrations
- Safe –approved for use directly on food
- EPA registered
- FDA registered
- Organic registered –Organic Materials Review Institute (OMRI)



# Diffusion Machines



**LAVENDER**  
[Calm]

## Benefits

- 0-110,000 cu ft saturation adjustability.
- Dry Diffusion capable of .2 Micron.
- Stand alone or HVAC coupler.
- Standard 325 ml canister.  
625ml optional.
- CE certified components.
- 110/220 V operation.
- 2 yr warranty.
- 2 diffuser operation optional.
- Available wifi controller fall 2016.
- Available mounting bracket.



**LITSEA CUBEBA**  
[Brighten]



**SWEET ORANGE**  
[Energy]

## Selecting an Oil

- SCENTING FOR THERAPEUTIC RESULTS.  
SLEEP/RELAXATION (LAVENDER)  
ENERGY (MINT/CITRUS)  
DETOX {EUCALYPTUS}
- SCENTING TO ACCENT DÉCOR.  
WOODS (WOODS)  
WHITE/STAINLESS (MINT/CITRUS)  
EARTH TONES (HERBALS)
- SCENTING FOR THANKSGIVING/CHRISTMAS  
(CINNAMON LEAF, FRANKINCENSE & MYRRH)



**PEPPERMINT**  
[Refresh]



**SPEARMINT**  
[Heal]



# Water Makers



## Sailor Special



## Essential



A Simple water maker 400 gpd  
small & reliable

## Features and Benefits

- Compact and Versatile, Produces 30 - 10,000 Liters Per Hour
- Consumables are non Proprietary
- Lower Maintenance Cost
- Low energy consumption, 35% Less
- Higher Production, 60% More
- Fully Automatic & Semi Automatic
- Quiet Electronic Control Panel with Microprocessor, One touch Operation and Fresh Water Flush
- Other Options Available

## Bi Compact



Bi Compact Bianco

## Features

- 3000-4000 GPD
- Duplex-High Production
- Single or Dual Usage
- In a single, space saving frame

# Sewage Treatment



ECOMAR treats and discharges overboard disinfected sewage in compliance with international regulations to render it dischargeable directly into the sea, without solid residues.

## Features

- Able to treat grey and blackwater
- POLLUTION FREE: the disinfectant liquid does not release poisonous substances
- NO RESIDUALS ON BOARD: installation of sludge tank not required
- EASY TO USE: totally automatic and able to operate manually in an emergency
- COMPACT: designed to work in small machine rooms
- VERSATILE: available in 230/400V A.C., 50/60Hz.
  - Other voltages and frequencies available.

**AVAILABLE IN DIFFERENT VERSIONS AND CAPACITIES**  
**2000-54,500 LITERS A DAY.**

**USCG APPROVED MODELS.**

**CERTIFIED BY LLOYD'S REGISTER ACCORDING TO THE RESOLUTION MEPC 227 (64) AND EUROPEAN DIRECTIVES (MED) 96/98/EC AND SUBSEQUENT AMENDMENTS.**

An optional remote control is available from an onboard PC, and also GSM or SAT link, that allows remote operation, programming, diagnosis and maintenance. The system will also work in manual emergency mode.

# Crushed Ice



FRESH & SALT WATER CRUSHED ICE

## ICESEA

### Features and Benefits:

- Salt or Fresh Water Ice Production.
- Continuous crushed ice making process... no harvest time delays.
- Up to 66% more energy efficient than ice cube models.
- Up to 53% more energy efficient than other crushed ice models.
- Split System allows auger to be remote mounted from condensing unit.
- Heavy duty Stainless Steel Auger & Evaporator assembly.
- Freezing chamber cleaning delay permits drive motor to start with no loads.
- Electronic Control Board:
  - Electronic bin level control
  - Conductivity probe to determine if there is water in the reservoir
  - Current meter to measure the amp draw of the auger drive motor



### Condensing Unit

#### IC800F

Dimensions: 12.5"L X 10.5"W X 13"H  
13 AMPs @ 115V  
6.5 AMPs @ 230V



### Evaporator Unit

#### IC800F

Dimensions:  
16.5"L X 10.25"W X 19.5"H

# Self Contained Unit



## NEW Self Contained Unit!

### IC800 Self-Contained

Dimensions: 22.5"L x 16.25"W x 20"H

## Features and Benefits:

- Same features as split system
- New compact design
- Great for fishing vessels and beverage boxes
- Available in 115/220V
- Includes pre charged refrigerant lines
- Available in 800, 1200, 2400lbs a day

ASK ABOUT NAUTIC-KOLD™ CUSTOM MARINE REFRIGERATION PRODUCTS ARE MANUFACTURED TO YOUR SPECIFICATIONS USING THE HIGHEST QUALITY MARINE STAINLESS.

ADDITIONAL INFORMATION AND SPECS ON OUR WEBSITE

[WWW.YACHTMATE.COM](http://WWW.YACHTMATE.COM)

# WaterMakers



## Self Contained Unit

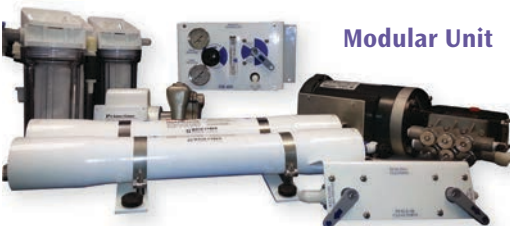
**SC200-1500 GPD**

Dimensions: 30"L x 13"W x 14"H

## SK Watermakers

### Features and Benefits:

- Stock Units available from 200 to 6000 GPD
- Custom Units to 10,000 GPD
- All High Pressure Fittings & Tubing 316L Stainless Steel
- Heavy Duty Construction and Components
- Includes Fresh Water Flush
- Includes Prefilters
- Includes Low Pressure Feed Pump
- Option: Remote Panel On/Off
- Modular or Self Contained
- 110 or 220 Volt
- 1 Year Warranty on Entire Systems



## Modular Unit

desalination

# Additional Products

## John Guest

### John Guest Fittings

The John Guest Group of Companies is the world's leading manufacturer of high quality push-in fittings, pipe and plastic plumbing systems to a wide variety of industries and applications such as Drinks Dispense, Plumbing, Pneumatics, Compressed Air Systems, Water Purification, Drinks Vending, Automotive and Telecommunications.

#### O-ring provides a leakproof seal Grips before it seals

The Collet (gripper) has stainless steel teeth which hold the tube firmly in position while the O-ring provides a permanent leak-proof seal

#### Stainless Steel teeth grip the pipe



### Digital Water Meter

- Mount on end of hose or pipe
- Small, simple and sturdy
- LCD reads flow rate and totals
- Choice of gallons or liter
- Works on any pump or gravity feed system with 3-30 gpm flow
- 2 Settings 1 resetable - 1 cumulative



### Hardness Test Kit

- Simple to use
- Easy to read results
- Measures in GPG hardness
- Measures in PPM iron
- Compact case
- Reliable, with a good shelf life
- A must have with any yacht



### Digital TDS Meter

- Simple to use
- Measures TDS up to 999PPM
- Pocket size



# Filter Cartridges & Housings

USED FOR WATER MAKERS, FRESH  
WATER FLUSH, SEDIMENT REMOVAL,  
TASTE & ODOR

## Max Pleated Polyester Sediment

**FM-5-10"** 5 -20 or 50 micron  
**FM-5-20"** 5 -20 or 50 micron



## BB Max Pleated Polyester Sediment

**FMBB-5-10"** 5 -20 or 50 micron  
**FMBB-5-20"** 5 -20 or 50 micron

## Carbon Block Cartridges

- For chlorine taste and odor
- Standard and BB-full flow
- Great for fresh water flush and drinking

**FM-CTO** 2.75" X 10"  
**FM-CTO20** 2.75" X 20"  
**FM-CTOBB** BB 4.5" X 10"  
**FM-CTOBB20** BB 4.5" X 20"



## BB-Full Flow Housings

- Available in all white, or blue with a black top
- Pressure relief button
- 1" or 1.5" in/out

**FM-50001PR** 10" - BB 4.5" X 10"  
**FM-100001PR** 20" - BB 4.5" X 20"  
**FM-4200** Standard size housing  
fits 2.75" X 10" or 20" filters  
All white or clear with white top  
Available in 1/4"-3/8" or 3/4" in/out



STANDARD 2.75" X 10" or 20"L | FULL FLOW (BB) 4.5" x 10" or 20"L

OTHER SIZES AVAILABLE IN LENGTH, MICRONS  
AND COLOR OF HOUSINGS

SEA RECOVERY COMMERCIAL SIZE PRE FILTERS-OWS  
AND PH CARTRIDGES AVAILABLE

AQUA PURE FILTERS AVAILABLE



## Mounting Brackets

FM-10AW  
FM-25A  
FM-30AW  
FM-35A

Single  
Single  
Double  
Double

White  
BB Aluminium  
White  
BB Aluminium



## Filter Housing Wrenches

WR-100  
WR-500

Standard  
BB-Full Flow



## Sea Recovery Filters

Pre filters and oil water separators, all models and sizes available.



0801063357  
5 Micron Filter  
08020723KD  
Oil Water Filter



0801063057  
5 Micron Filter  
08020622KD  
Oil Water Filter



0801061657  
5 Micron Filter  
0802062118  
Oil Water Filter

PLEASE VISIT OUR WEBSITE FOR MORE  
INFORMATION ABOUT THESE PRODUCTS

[www.YACHTMATE.com](http://www.YACHTMATE.com)

# Fresh Water RO

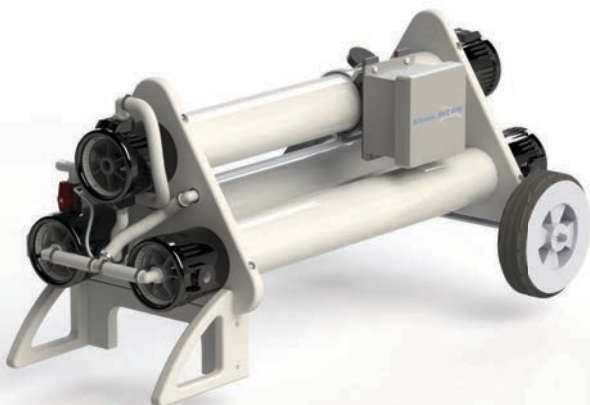
## Spot Zero Fresh Water RO

Dockside System

Weight 140 lbs

Dimensions: 21"H X 46"L

Shown with wheels & handle  
(optional kit)



## Features

- Cost effective and ease of maintenance
- A true "spot free" rinse
- 100% Portable Fresh Water Reverse Osmosis System
- Removes 90-99% of Total Dissolved Solids
- Removes up to 100% of Hardness
- Pressurizes water up to 150 PSI
- Wash down directly from the unit with purified water.
- Motor starts and stops with water demand
- Optional Wheel Kit
- Operates on 115V (230v Special Order)

**[www.YACHTMATE.com](http://www.YACHTMATE.com)**

spotless



# Going Green

Visit Yacht-Mate Products  
For a cleaner greener earth...



Yacht-Mate has always been an eco-friendly conscience business since it started. That's why this brochure has been printed on FSC certified post-consumer recycled paper.



Mixed Sources  
Product group from well-managed  
forests, controlled sources and  
recycled wood or fiber



# Yacht-Mate™ Products

Represented By:

---

YACHT-MATE PRODUCTS SHOWROOM LOCATION  
Water and Air Treatment Systems Dealer Inquiries Welcome  
3200 S Andrews Ave. No.105 • Fort Lauderdale, Florida 33316  
954-527-0112 • Toll Free 877-922-4862 • Fax: 954-628-5059  
sales@yachtmate.com • www.yachtmate.com